



Scarce times: Alternative Futures

Home Improvements in
Bruce Road and
neighboring Bromley-By-
Bow area.

Introduction

- Lutfa Begum 55 years old
- Mother of 2
- Early retired from NHS Practice Nurse

- Sonia Khan 23 student

- Moved in 2003-till present

Vision

- To improve the quality of the homes in Bromley-by-Bow and Bruce Road
- Health and Safety in homes and outside space
- Storage and Space in homes
- Comfort
- Environmentally Friendly
- Welcoming

Continued....

- As a resident in Bruce Rd for the past 8 years I have realized the poor structure and architectural design of my homes in BBB
- Ever since I have moved I have been trying to develop my home to find peace and comfort for my family and general living..
- Fortunately I was able to achieve this but was left slightly struggling, overall spend was 50K

- Simple changes can make great difference
 - To general well being
 - Family life
 - Fun
- BBB has high rate of unemployment, crime, over crowding, parking issues (too many cars).

WHY?

- The home is a mess leading to all sorts of issues
- We Live here so we know!!
- Our future looks SAD!!

Our Vision for the 2062

To make Bromely-By-Bow a safer, more friendly, easy to access and welcoming neighborhood

How?

- Starting with home

Before and After

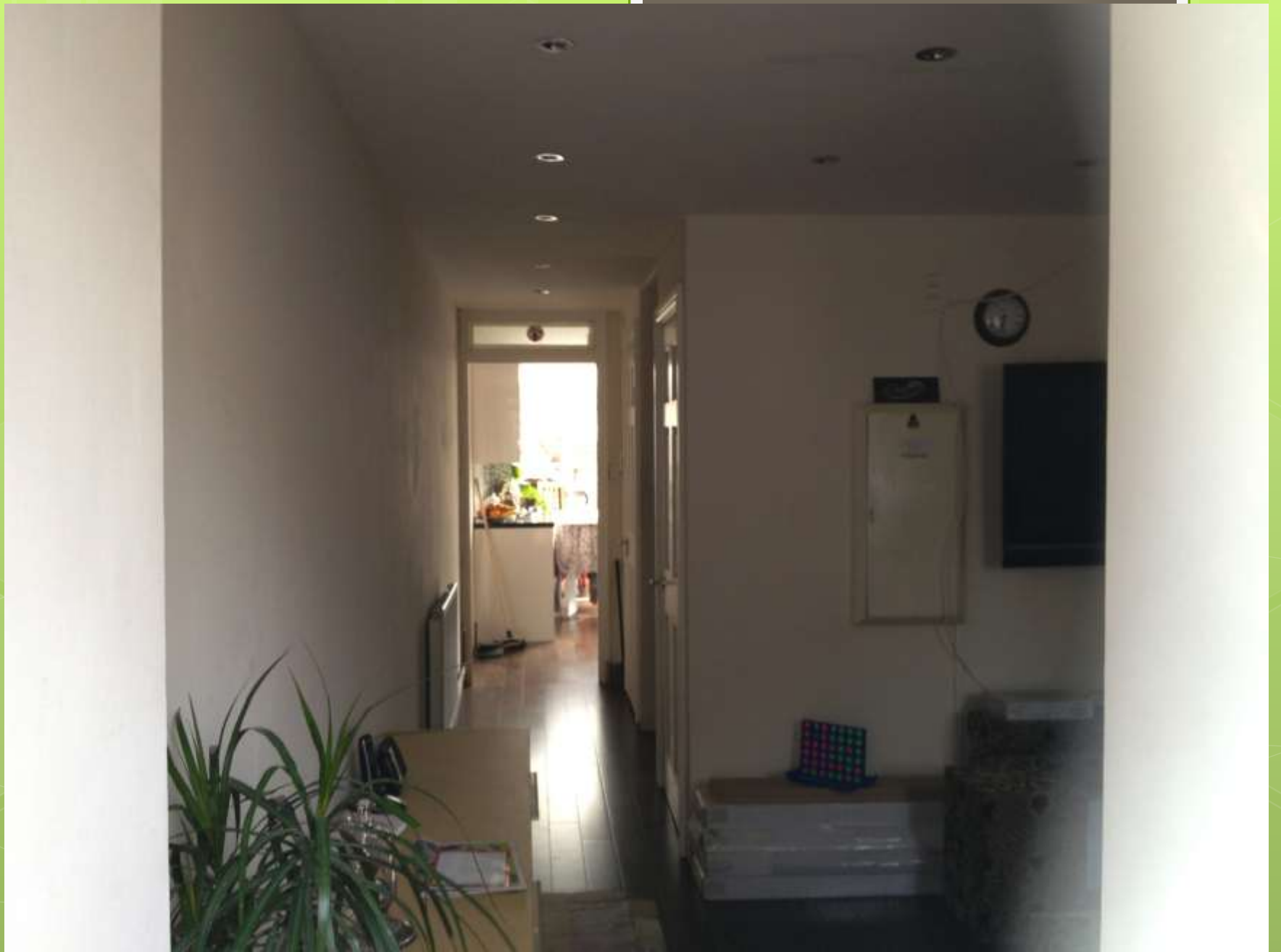










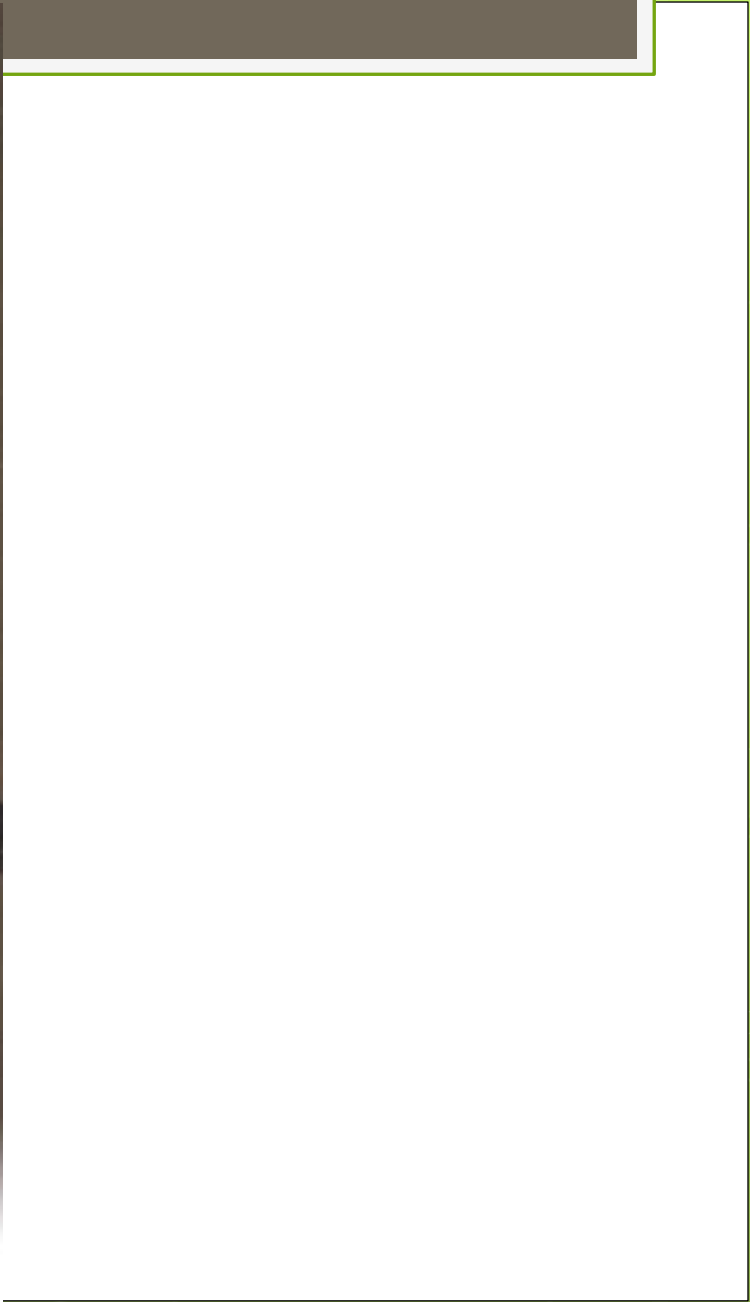












- **Before-** 2 double bedroom rooms and 1 Single upstairs, Living room upstairs, 1 bathroom upstairs, 1 toilet downstairs and 1 single room downstairs. No double glazing!
- **Now-** 4 Double bedrooms and 1 bathroom upstairs, Living room ground floor, Shower and separate toilet downstairs, larger Kitchen and dining space. Double glazing with outdoor patio.
- Total cost of 50K
- Much safer, Spacious and Comfortable.

Simple changes can make a great difference!

- Removing just the gas meter outside allowed me to open up the single bedroom downstairs and convert to a living room, Upstairs living room is now a double bedroom.
- Space under stairs downstairs is now a toilet
- The toilet is now a standing shower
- Kitchen extension allowed us to have a proper dining space.

Bruce Road..

- More Green, healthier and welcoming
- New developing flats and buildings should have car parking space on ground floor under the flats rather than congesting the space and narrowing the roads.
- Ground floor flats should have small gardens.

Health Issues

- Deficiency
- Mental health
- Domestic Violence
- Addiction